

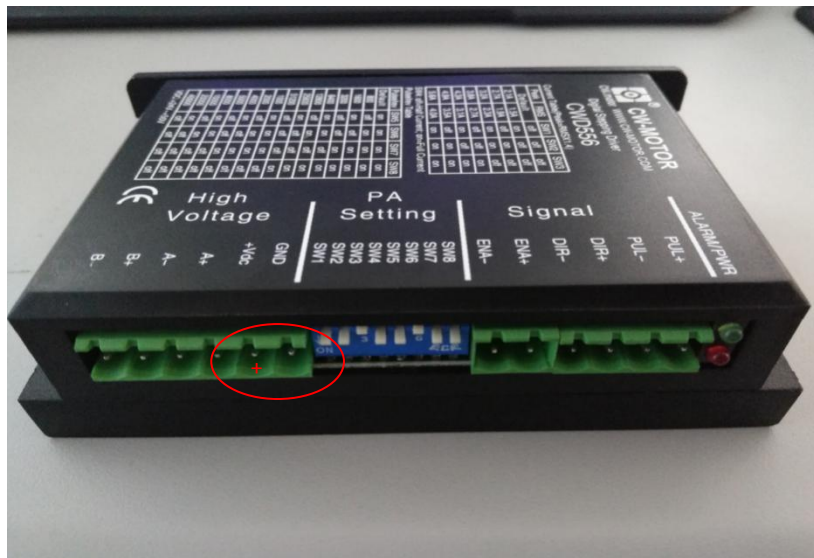
1. Software Installation

Use the software I sent to you for the low power servo motors.



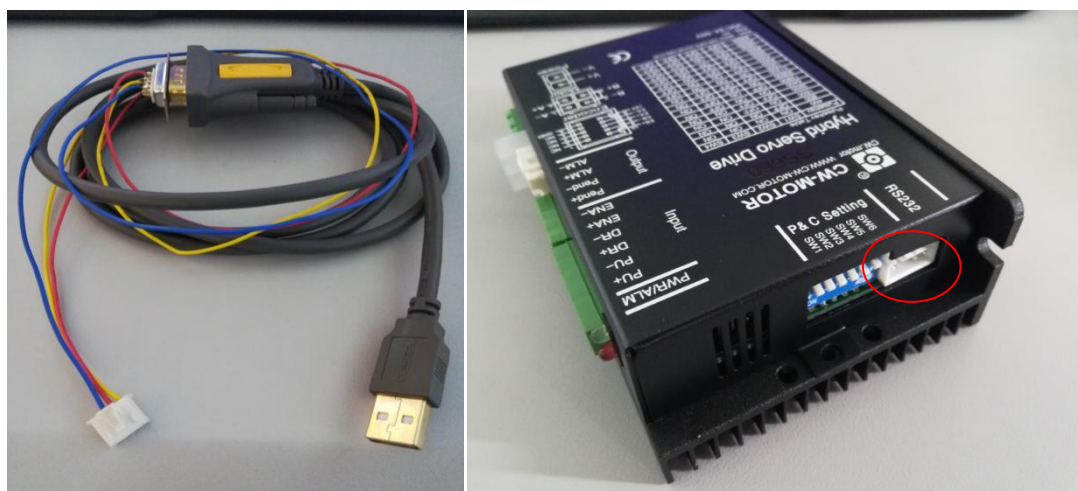
2. Wire connection when making the parameters

a. Power supply port:



As the above the picture, the red circle part is the power supply port. When writing the parameter, we should put the 24v-50v power.

b. Port for writing the parameter:



Picture 1

picture 2

The first picture is the parameter cable. The USB port is connected to the computer. Another port in the second picture marked with the red circle is connected to the driver to write the parameter.

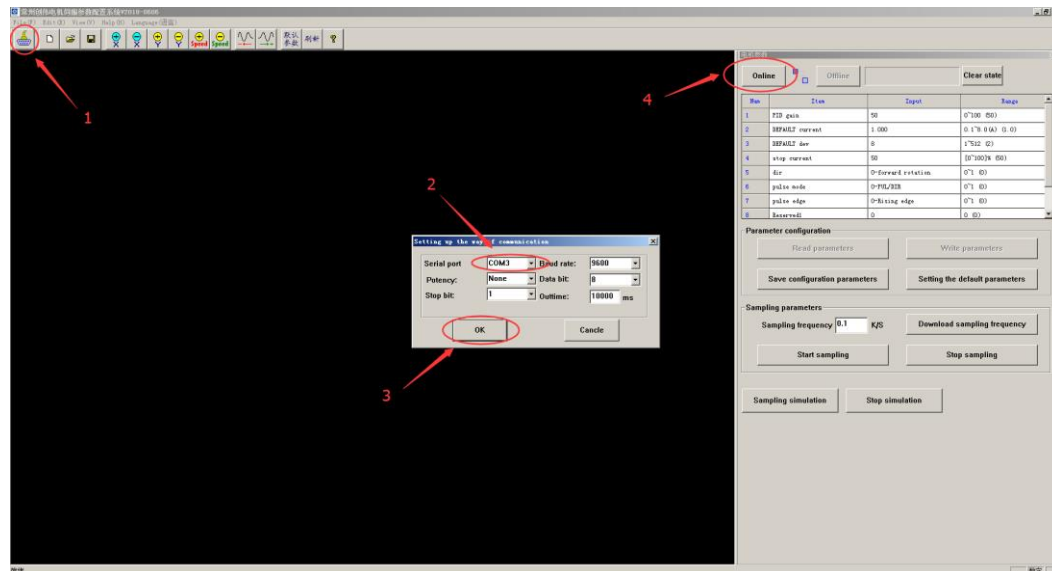
c. Notes:

Use the DC 24v-50v DC power. Don't ,make the reverse connection

3. Software parameter debugging:

a. connect the power of the driver and the parameter cable

b. Open the “cwdj” software, switch on the power supply.

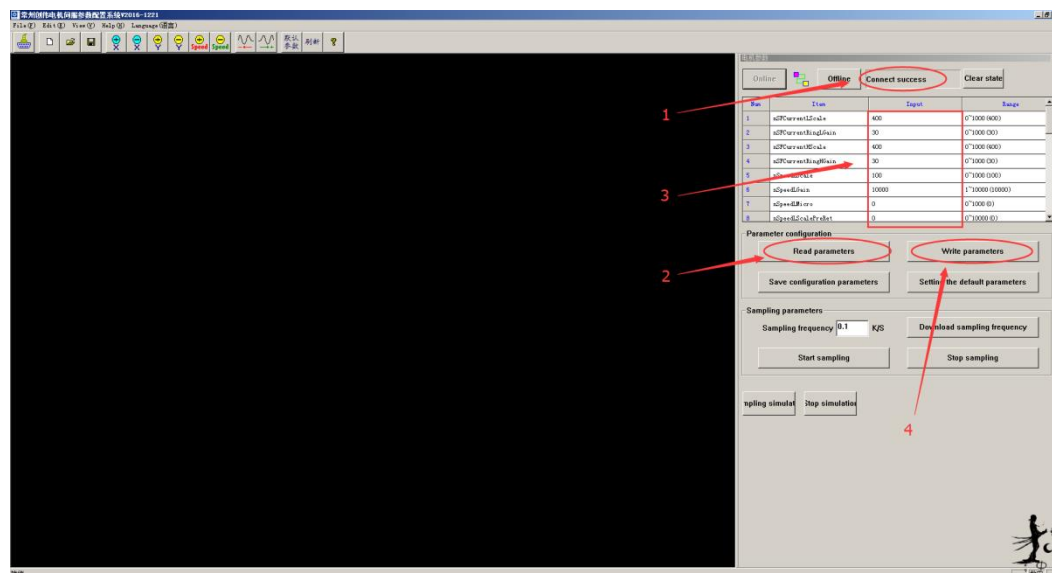


1.Click the “Serial port Settings” on the top left corner

2.Choose the “COM” port in the Popup window

3.Click confirm

4. Click online



① The status bar shows the current state

② Read the parameter. It shows the parameters in the driver now

③ According to the users' requirement and the actual situation, change the parameters in the red circle.

④ After resetting the parameter, read the parameter.

⑤ After operating successfully every time, the status bar shows the current status.

Parameter setting table				
Number	Definition	Initial value	Range	Description
1	PID gain	30	0-100%	Current loop gain.
2	Default cur	1.0	0.1-8.0	No use. The current and dev are up to the switches.
3	Default dev	8	1-512	
4	Stop current	50	0-100%	The current automatically reduced to 50% of the selected dynamic current.
5	Direction	0	0-1	0: CW 1: CCW
6	Pulse mode	0	0-1	0: pul/dir 1: cw/ccw
7	Pulse edge	0	0-1	0: Rising edge 1: Falling edge